

# 2021/2022 Annual Report

Arts, culture & liveability

THE  
**FAIRLEY**  
FOUNDATION

# Contents

<b>History .....</b>	<b>3</b>	Shepparton Festival.....	15
<b>Chair Report .....</b>	<b>4</b>	Melbourne Symphony Orchestra.....	16
<b>Executive Report.....</b>	<b>6</b>	The Australian Ballet.....	17
<b>Trustees .....</b>	<b>8</b>	Ormond College .....	18
<b>Programs.....</b>	<b>10</b>	Australian National Piano Awards .....	19
Heinze Music Program .....	11	Awaken Dance Theatre.....	20
Fairley La Trobe Lecture.....	12	St. Paul's African House.....	21
Greater Shepparton Foundation .....	13		
SAM – Shepparton Art Museum.....	14		
SAM – Ceramic Indigenous Awards.....	14		
<b>Case Study:</b>			
<b>Abbigail, Ormond College .....</b>	<b>22</b>		
<b>Funding.....</b>	<b>23</b>		



## Contact

Vanessa Parry  
Executive Officer

PO Box 997  
Woodend VIC 3442

## Acknowledgement of Country

The Sir Andrew & Lady Fairley Foundation wishes to acknowledge the traditional custodians of the land which now comprises Greater Shepparton. We pay respect to the tribal elders, past present and emerging, celebrate their continuing culture and connection to land, water, and community.

# History

The Sir Andrew and Lady Fairley Foundation was established in 1965 with a bequest from respected Shepparton businessman, Sir Andrew Fairley and his wife Mineta. As Managing Director of Shepparton Preserving Company Ltd. (SPC) Sir Andrew created what by the mid-1960's was the largest fruit preserving and canning complex in the southern hemisphere. In 1927 he became the first Mayor of Shepparton and from 1948 the first Mayor of the City of Greater Shepparton.

According to his instructions, the Sir Andrew and Lady Fairley Foundation is for the benefit of the people and communities of the Greater Shepparton area. Over the last 50 years, the Foundation has been recognised as a trusted voice in the community, influential in many areas of local life: education, employment, the arts, health, sport and social justice.

## Vision & Purpose

In 2022 the Foundation's vision was refined to better suit the current climate.

In 2023, the Foundation will embrace our new vision and mission as follows:

The Fairley Foundation's vision seeks to create a more liveable, culturally rich, and artistically diverse community in Greater Shepparton.

It is our mission to achieve our vision with a spotlight on programs that enhance the arts, culture, and education pathways for our community.

# Chairs Report

It gives me great pleasure to provide this report on the activities of The Sir Andrew and Lady Fairley for the period ended 30 June 2022. It's been a time of great challenge for many, particularly in Victoria, but equally great progress has been made in a number of areas.

The Foundation continued its work in primary schools in Greater Shepparton through the Heinze Music Program, advancing capability of literacy and numeracy through music for hundreds of students. When this face-to-face teaching wasn't possible, through the pandemic, programs were switched online.

Financial support was also provided to Foodshare, to assist those in lockdown whose financial circumstances were significantly impacted by the pandemic and its implications.

On a brighter note, work continued during the year on the completion of the Shepparton Art Museum. This enabled the official opening to occur in November, with an ambitious artist program being featured. It included 9 new exhibitions, 4 new commissions, over 200 artists being represented, and 160 Indigenous and First Nations art works on display.

This world class museum, spanning four floors, is transforming the face of Shepparton, and particularly the perception of the city in Australia's major cities as a centre of arts and culture.

The Foundation was privileged to be a major donor to the SAM campaign to make this aspirational landmark a reality.

One of the highlights of the SAM calendar is the Indigenous Ceramics Award, held every two years, to reward Australia's finest and growing cohort of Indigenous ceramicists. This award is not simply about creating art, but is rather an enabler of this generation of First Nations artists to embrace their culture through artistic practices.

Another signal highlight of our year was the delivery by Prof Glyn Davis AC of the Fairley La Trobe Lecture in July 2021. Prof Davis at the time was the CEO of the Paul Ramsay Foundation, one of Australia's largest philanthropic organisations.

He spoke of the need and obligations for those who have been fortunate in 'life's lottery', to provide philanthropic support to those people who have been less blessed with their circumstances. Many in our community are struggling, both emotionally and financially, and those limitation prevent them from living full lives.



It's been a time of great challenge for many, particularly in Victoria, but equally great progress has been made in a number of areas.

The Lecture was provided virtually because of the lockdowns, but was well attended with a sizable audience in person at La Trobe University Shepparton Campus, as well as many attendees online.

With the initiative of the creation of the Greater Shepparton Foundation, the Fairley Foundation makes an annual grant of \$100,000 to support the critically important work that GSF is doing in ameliorating social disadvantage.

The presence of the Greater Shepparton Foundation enables the Fairley Foundation to concentrate more on its commitment to early intervention in education through music, and to pursue and to promote cultural outreach throughout the Greater Shepparton Community through the creation of partnerships.

Programs with the Melbourne Symphony Orchestra, the Australian Ballet, SAM, and support of the National Piano Awards are some of the initiatives which manifest the Trustees commitment. This seeks to ensure Greater Shepparton continues to develop as a city which is culturally rich, engages and promotes diversity, and provides opportunity for those with immense artistic and cultural talents to develop a sustainable and successful career in their field.

The Foundation looks forward to continuing this important work.




**Andrew Fairley AM**  
Chair  
Sir Andrew and  
Lady Fairley Foundation



# Executive Report



“The Fairley Foundation’s partnerships include an array of educational, artistic, and cultural programs that support and connect this community with educational opportunities and artistic excellence.

Since joining the Fairley Foundation in April of 2022, I am already very fond of the region and the community that makes up the Goulburn Valley region. The history of the Foundation, its focus on impactful programs and its emphasis on local relationships are to the Trustees. The Fairley Foundation’s partnerships include an array of educational, artistic, and cultural programs that support and connect this community with educational opportunities and artistic excellence. As the Foundation moves into its 58th year, a focus on the measurement and impact of existing programs will increase while better understanding the unique needs of this special community. Creating sustainable programs will be the main driver in all that the Foundation supports.

On meeting the talented and inspiring Abbigail Makin, who was awarded the Ormond College Scholarship by the Fairley Foundation, I witnessed firsthand the profound and life-changing impact the Foundation can achieve for an artist wanting to study and live in Melbourne. Abbigail is in her second year of studies at the Victorian College of the Arts though travels frequently to Shepparton to engage with the local dance theatre company, - Awaken - in order to demonstrate and utilise her skills to support and assist in the artistic growth of the younger local counterparts.

The work, application and dedication of The Australian Ballet Education and Outreach Team was experienced by a packed house at the Riverlink’s East bank during a student performance earlier this year. The performance highlight was experiencing what a school-based intensive program can create and deliver when engaging and working with local students in years 7-12 from the Greater Shepparton Secondary College.

Visits from the Melbourne Symphony Orchestra, the Australian Ballet, the Foundation’s commitment to Ormond College at Melbourne University; and their contribution to the iconic Shepparton Art Museum demonstrates the Foundation’s commitment and intimate involvement with this community with an offering of opportunities that sometimes cannot be accessed when living regionally.

The Foundation’s partnership with the Greater Shepparton Foundation will continue into FY22-23 as the primary funding arm to support programs focusing on social need and welfare within the community. The Fairley La Trobe lectures will continue to attract speakers nationally and abroad to offer the Shepparton community increased learning and exposure to sought after and respected keynote speakers in partnership with the Latrobe University.

I would like to acknowledge the work of the Heinze Music program and its contribution to the children and young people of Shepparton. This program is an example of direct impact. For over 13 years it has continued to provide quality music and education each year to more than 130 children and young people in four schools, in which some of these students, experiencing a breadth of social challenges. The program continues to enhance and engage children in learning and language development while broadening their social skills. The ultimate objective of this program is to keep children and young people engaged through school.

The Fairley Foundation will continue to support programs that create long-term and impactful results for those living in the Greater Shepparton community and I look forward to being part of that effort.

**Vanessa Parry**  
Executive





# Trustees



**Andrew Fairley AM**  
Chair

Andrew Fairley is a Commercial and Equity Lawyer at Hall & Wilcox in Melbourne. He has a long involvement with the philanthropic sector as both an advisor and trustee. He has been Chair of the Fairley Foundation since 1999 and is a great nephew of Sir Andrew Fairley.

He is also Deputy Chair of the Mornington Peninsula Foundation. He is a past Chair of both the Foundation for Alcohol Research and Education, and the Luke Batty Foundation.

He is Chair of a Qualitas Limited, a listed funds manager with assets under management of \$5.8B. He is also a Director of the Australian Financial Complaints Authority. He is the Consul General for Finland in Victoria.



**Carmel Johnson**  
Deputy Chair

Carmel Johnson has been living and working in the Goulburn Valley for more than 35 years. During this time Carmel has primarily worked in fundraising and community relations roles, and with her Special Education qualifications, served as the inaugural Principal of Verney Road Special School and later as Manager at Connect CV in Shepparton.

Carmel's current role is Development Manager at SAM (Shepparton Art Museum). Prior to joining SAM, Carmel led the GV Health Foundation for thirty years to ensure that the community of the Goulburn Valley was well served. Carmel was the inaugural Chair of the Shepparton Arts Festival and serves on a number of corporate and community boards. Carmel is Deputy Chair of the Foundation.



**Terry Campbell AO**

Terry Campbell AO is a great-nephew of the late Sir Andrew and Lady Fairley, for whom the foundation is named. Terry is Senior Chairman of Goldman Sachs, the global and investment banking firm. He is also Chairman of Australian Foundation Investment Company (AFIC) and Mirabooka Investments Limited.



**James Freemantle AO**

James Freemantle, a grandnephew of Sir Andrew and Lady Fairley, is a Company Director and former banker.

He has been the Chair and Director of a number of public, private and Government organisations over the past 15 years with a particular interest in the non-profit sector.

James is passionate about supporting people with disabilities, specifically through the provision of affordable housing and employment opportunities.



**Cate Fairley**

Cate Fairley is the founder and Managing Director of I'ara Support Co-ordination located in Deniliquin NSW.

She has a longstanding passion for supporting vulnerable people in regional communities and has extensive experience in the provision of disability services. She also has a background in working with disadvantaged young people and formal qualifications in psychology.

Cate had previously been Board Secretary to the Melbourne Fashion Festival Board, where she developed an understanding of governance and board management. Cate brings expertise in social disadvantage, disability services and complex behavioural management to the Fairley Foundation Board. She was appointed to the Board in 2022.



**Fiona Phillips**

Fiona is the daughter of Rosemary Hopkins (nee Fairley) and was appointed a Trustee in December 2013. Fiona has taught in and through music in a variety of educational and community settings in regional Victoria. Her work with Early Years and Primary School practicing and pre-service teachers is significant and she currently holds the position of Associate Lecturer in Arts Education at Deakin University, Geelong. Her research and scholarship have focused on the ongoing practices of exploring new pedagogies, to inform and facilitate change in Arts Education (Music) within a located, cloud-based and virtual teaching and learning environment. She loves to sing and help others find their voice.



**Andrew Mott**

Andrew Mott has been involved in music education for 30 years with experience in both regional and metropolitan schools and across numerous government and independent school music programs. He undertook a two-year stint in Michigan, USA, completing a master's in music. In recent years, he has served as Director of Music at Blackburn High School and as the Head of Music, Caulfield Campus, Caulfield Grammar. He has a particular interest in the development of music ensemble performance and has worked in all areas across symphony orchestras to jazz big bands. Andrew has also served as a member of the University of Melbourne's Faculty of Music Board and on the AMEB Examinations Advisory Board, representing government schools at various times.



**Georgina Fairley**

Georgina has been practising Architecture for six years, following completion of her Master of Architecture in 2010.

Her current focus is on design for community and learning in both metropolitan and regional areas. With interests ranging across a wide range of subjects, Georgina keenly seeks ways to engage with the world around her, from further education and attending local events to volunteering.



**Anna Turnbull**

Anna Turnbull is a Goulburn Valley community-member, appointed trustee in 2019. She is a communications specialist with a Bachelor of Arts (political science).

Working initially in newspapers as a reporter, she has gone on to develop her knowledge of the water industry and natural resource management through various media and communications roles in the Shepparton region. Her past board roles include the Rodney Neighbourhood Steiner Kindergarten and Shepparton Arts Festival. Anna is a current board member for the Greater Shepparton Foundation. Anna grew up in Melbourne, but since 2002, she has lived on the Turnbull family orchard, with her husband Chris. They have three young children. Passionate about enabling regional access to the arts Anna values Shepparton's relentless community spirit and innovative thought making this challenge a reality. She is grateful for the opportunity and unique lifestyle this rural setting provides.



**Michael McIlroy**

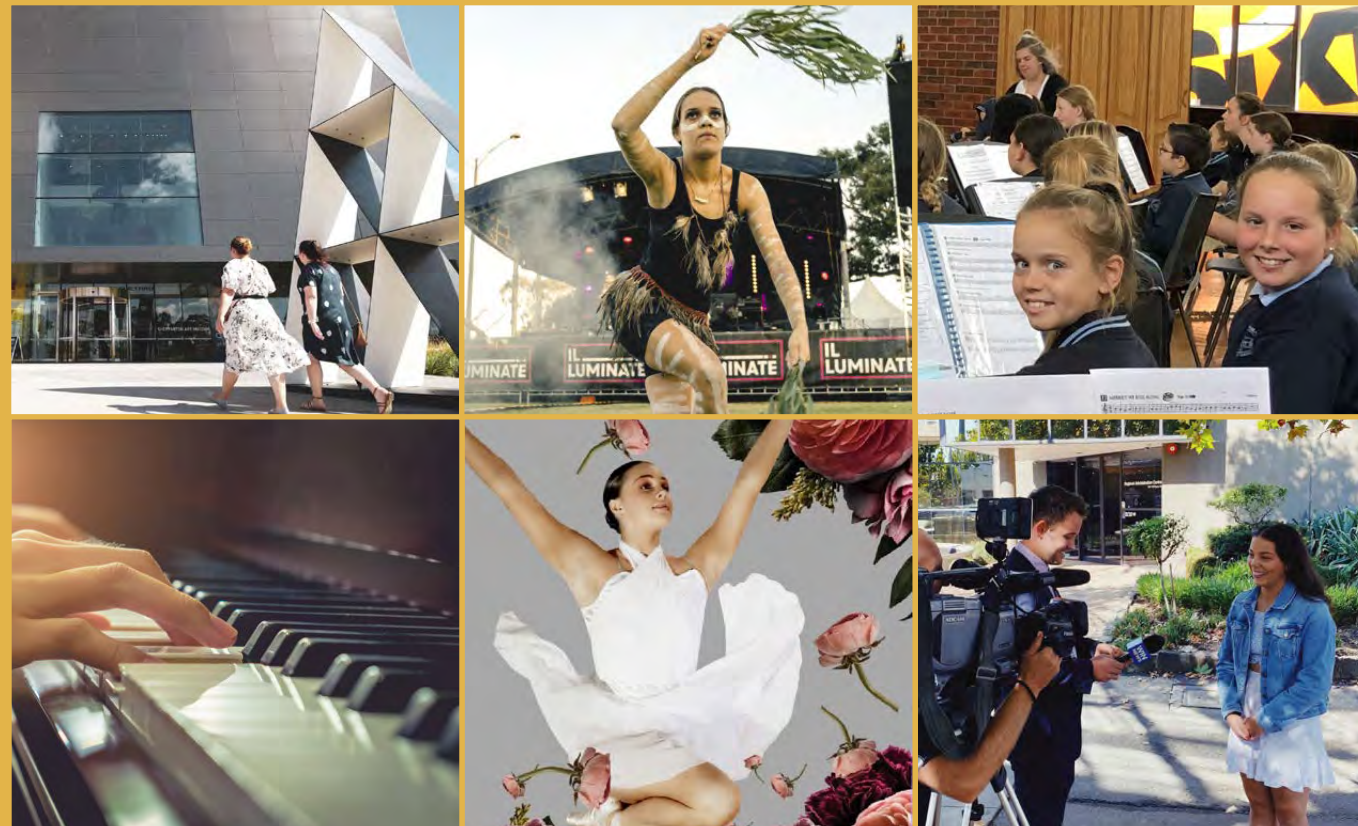
Michael is an experienced commercial and property.

With a bachelor's degree in Commerce (Accounting) and in Law, Michael has leant upon his prior experience operating Hospitality businesses to combine his past business experience and tuition to become a trusted Lawyer for local business in the Goulburn Valley community.

Michael has been involved with various sporting clubs in the Goulburn Valley, along with lecturing Business Law and Environmental Law at the La Trobe University Shepparton campus.



# Programs



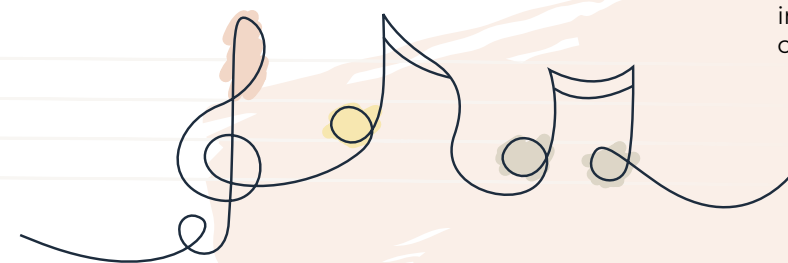
## Heinze Music Program

\$40K

The Heinze Music Program continues to provide quality music education each year to more than 130 children and young people in primary schools within and around Shepparton, enhancing engagement in learning, language development and social skills.

Established in 2009, the Heinze Music Program currently operates band and classroom music across four primary schools, Tatura Primary, Murchison Primary, Mooroopna Primary and Mooroopna Park Primary. In addition, a band program has been formed at the Greater Shepparton Secondary College.

The Fairley Foundation supports the program by providing instruments and the employment of educators and welcomes any funder interest from those wanting to invest in such a vital and effective program to the children and young people of Shepparton.







*Pictured from left; Head of Campus at La Trobe University Shepparton, Elizabeth Capp, Chair of the Fairley Foundation, Andrew Fairley AO, Senior Deputy Vice Chancellor of La Trobe University, Professor Susan Dodds, General Manager of Inclusion and Social Policy, AFL, Tanya Hosch, Deputy Chair of the Fairley Foundation, Carmel Johnson, Executive Chair of the Kaiela Institute, Paul Briggs OAM, Aunty Pam Pedersen and Academic Director of Indigenous Research at La Trobe University, Professor Julie Andrews.*

# Greater Shepparton Foundation

**\$100K**

The Fairley Foundation continues its commitment to support the Greater Shepparton Foundation (GSF) achieve its bold vision to have “no one living with disadvantage in Greater Shepparton.” The Foundation has provided \$100,000 per annum over the past four years and remains true to its commitment.

Established in February 2019, the GSF has a mandate to significantly reduce complex socio-economic disadvantage in the Greater Shepparton region. GSF's focus is to support the most vulnerable and disadvantaged in our community and draw on local knowledge and source expertise from far and wide, to fulfil their core purpose – to be the connector of resources and skills to meet unmet need in our community.

The GSF is committed to tackling complex issues such as unemployment, educational aspiration amongst our youth, early childhood development and homelessness.



**Greater Shepparton Foundation vision:**

“To have no one living with disadvantage in Greater Shepparton.”

# Fairley La Trobe Lecture

**\$5K**

On 20 July 2022, the Fairley Foundation in partnership with La Trobe University held its annual Fairley La Trobe Lecture ‘Community Relations of Substance’. Keynote speaker, Tanya Hosch, General Manager of Inclusion and Social Policy at the AFL.

In this lecture, Tanya explored the impact that indigenous people have had on the development of our current society. She discussed the importance of Indigenous Australian issues, affirming that Indigenous people should play a greater role in shaping regional Australia, and unpacked how these issues are benefiting the entire Australian community.



# Shepparton Art Museum (SAM)

**\$100K**

Deputy Chair of the Fairley Foundation Carmel Johnson continues to be delighted by the reaction of local visitors.

"We are seeing many school groups come to SAM and then after kids have had a great experience here, they quite often convince their parents to bring them back, which introduces more people to the exhibitions that we have here" comments Carmel.

The Fairley Foundation's proud association and support of this beautiful landmark in Shepparton believes the

gallery is a magnet for tourism, which opens additional economic and social opportunities within Shepparton.

SAM represents exciting opportunities to engage with Aboriginal artists and culturally and linguistically diverse communities.

The Fairley Foundation has made a significant contribution to support the SAM development with this years' \$100,000 concluding a total contribution to date of \$500,000.

# SAM – Ceramic Indigenous Awards

**\$40K**

The Fairley Foundation is honoured to support the Shepparton Art Museum (SAM) Indigenous Ceramic Award (ICA). A most prestigious national award for Indigenous ceramics, showcasing new and exciting developments in the field.

The acquisitive prize attracts ceramic works from Indigenous artists across

Australia and builds on SAM's significant holdings of Indigenous ceramics providing a national platform to share personal, historical and deep cultural learnings from artists and Country. It celebrates and supports the rich and diverse use of the ceramic medium by Indigenous artists and acknowledges the special industry of ceramic art.

The Shepparton Festival celebrated 26 years in 2022.

# Shepparton Festival

**\$15K**

Founded in 1996, the Shepparton Festival is a significant fixture on the regional arts calendar, engaging hundreds of artists in dozens of events across the Goulburn Valley each March.

During a fortnight spanning March and April, the Shepparton Festival spread across the CBD and the region's small towns to deliver inspiring new artworks, moments of humour and community

celebrations, as well as opportunities for collaboration between emerging and established artists to create engaging works and creative experiences in a variety of venues and spaces across the region.

The Fairley Foundation has supported the festival for a long time and clearly values the benefits of the programs brought to the regions' community.

*Above: Photography by Adele Dhillon courtesy of Greater Shepparton City Council.*

*Below: Photography by Amina Baroli, with wall artwork by Tammy-Lee Atkinson and Chloe Jones courtesy Shepparton Festival.*





# Melbourne Symphony Orchestra

\$10K

The Fairley Foundation's relationship with the Melbourne Symphony Orchestra (MSO) has grown over the past three years and we have been delighted in being part of their support to deliver regional activities this year. Weathering the pandemic together and being part of taking the Melbourne Symphony Orchestra on regional tour to Shepparton in April 2021, as part of its three-town tour to the communities of Shepparton, Wangaratta and Bendigo; has brought much overdue joy to the Shepparton region.

Furthermore, six MSO musicians, together with esteemed music educator Karen Kyriakou, hosted a 3-hour interactive workshop for 89 children from the local Heinze Music Program drawn from schools across Shepparton. During these sessions, students participated in sectional workshops, demonstrations from MSO musicians, and collaborated on composing a piece of music which they then performed.



# The Australian Ballet

\$24K

The Fairley Foundation has a longstanding partnership with the Australian Ballet bringing dance educators to the region for a series of workshops and performance opportunities.

This partnership aims to raise access to the arts and attainment in high school students in Shepparton and provides training for teachers and community leaders to support dance delivery within their schools and the community. The Australian Ballet works directly with students across various Greater Shepparton schools and over a two-week period, trains with over 100 students from Years 7 to 12. These students increase their skills using choreographic tools such as time, space, form and motif, and explore specific theme in their work.



# Ormond College

\$11K

The Fairley Foundation are supporting an \$11,000 per annum, three-year financial assistance program for Greater Shepparton students who aspire to further education at Melbourne University, the Victorian College of the Arts (VCA), Melbourne Business School or the Australian National Academy of Music to assist with the costs of residency at Ormond College in Melbourne.

It is the belief of the Sir Andrew and Lady Fairley Foundation that students in Greater Shepparton should not be discouraged from attending University because of the costs associated with locating to Melbourne for the duration of their studies.

The Fairley Foundation / Ormond College Financial Assistance Program is one of many financial assistance opportunities available to students who wish to consider living on campus at Ormond College, with the College distributing \$1.2 million in support in 2018.

# Australian National Piano Awards

\$11K



The Australian National Piano Award showcases some of Australia's most brilliant emerging classical pianists and is open to Australian based pianists aged 21-35 years.

The Award embodies the highest national and international music standards and recognises the pursuit of professional excellence, technical brilliance, and extraordinary flair. The Shepparton community welcomes these young pianists with warmth and enthusiasm to hear piano music in a cooperative festival-like atmosphere.

The benefits for young emerging artists are enormous: a substantial period of focus on performance, the necessity for stamina of concentration and wide-ranging repertoire, and good opportunities for feedback from industry professionals as well as from a large audience under professional performance conditions in a fine hall. The Fairley Foundation is honoured to support this event which showcases some of Australia's most brilliant emerging classical pianists.




A woman in a white tutu is captured in a dynamic pose, with her arms raised and one leg bent. Several pink roses are floating around her, some in the air and some at the bottom of the frame. The background is a solid light grey.

# Awaken Dance Theatre

\$3K

Being involved with the Awaken Dance Theatre over the past five years from their early beginning stages in 2018 to their current developments has been an exciting journey for both parties. Including the Australian Ballet as mentors, the incredible training experience of Awaken offers many young dancers in Shepparton with amazing learning opportunities, practical skills development, and pathways for their interest in this artform.

Their current seasons of BLOOM & AUTOMATIC has been an exciting journey and was an outstanding experience and viewing for all involved.

A woman in a red dress is sitting on a black chair, which is placed on a small, dark, circular stage. She is looking towards the camera. The background is dark and abstract, with some floral elements at the bottom.

Above; Photography by Kristen Doherty  
Photography with Graphic Design  
by Roar Kingdom Creative.

Left: Photography by Julie M Photography.

A stylized map of Australia is shown in the top right corner. It has a blue outline and is filled with a light blue color. The map is set against a white background.

# St. Paul's African House

\$20K

African House is a safe, welcoming space where all people who identify with African cultures can gather to preserve, honour, celebrate and pass on African cultures through stories, music, dance, food and fellowship.

They provide and support capacity building for people of African heritage to assist them to participate successfully and fully in the wider Goulburn Valley community. The Fairley Foundation Trustees understand due to the covid pandemic that short-term funding deficits can be created when venue hire facilities come to a halt.

As a result, the Foundation supports a part time local African community member to train as the African House Manager to support venue hire opportunities with existing local community groups and to expand and attract new partnerships. This type of capacity building funding will directly support African House to become more sustainable.





# Case Study

## Abbigail, Ormond College

With the University campus closed for much of the year (FY21-22) students residing at Ormond College were most thankful to be able to live within a student community. The Fairley Foundation Financial Assistance Program has made this experience possible for student Abbigail Makin.

Unlike 2020, when the impacts of COVID meant many students returned home for much of the year, in 2021 most of our students decided to remain at college for the full year.

Semester 1 offered many opportunities to participate in more 'normal' aspects of college life, such as Formal Hall, intercollegiate sports and Students' Club events.

It was certainly a challenging year, but Abbigail benefitted immensely from the sense of connection and community which living at Ormond offers.

Abbigail wrote the following words towards the end of last year in appreciation of receiving the Fairley Foundation support:

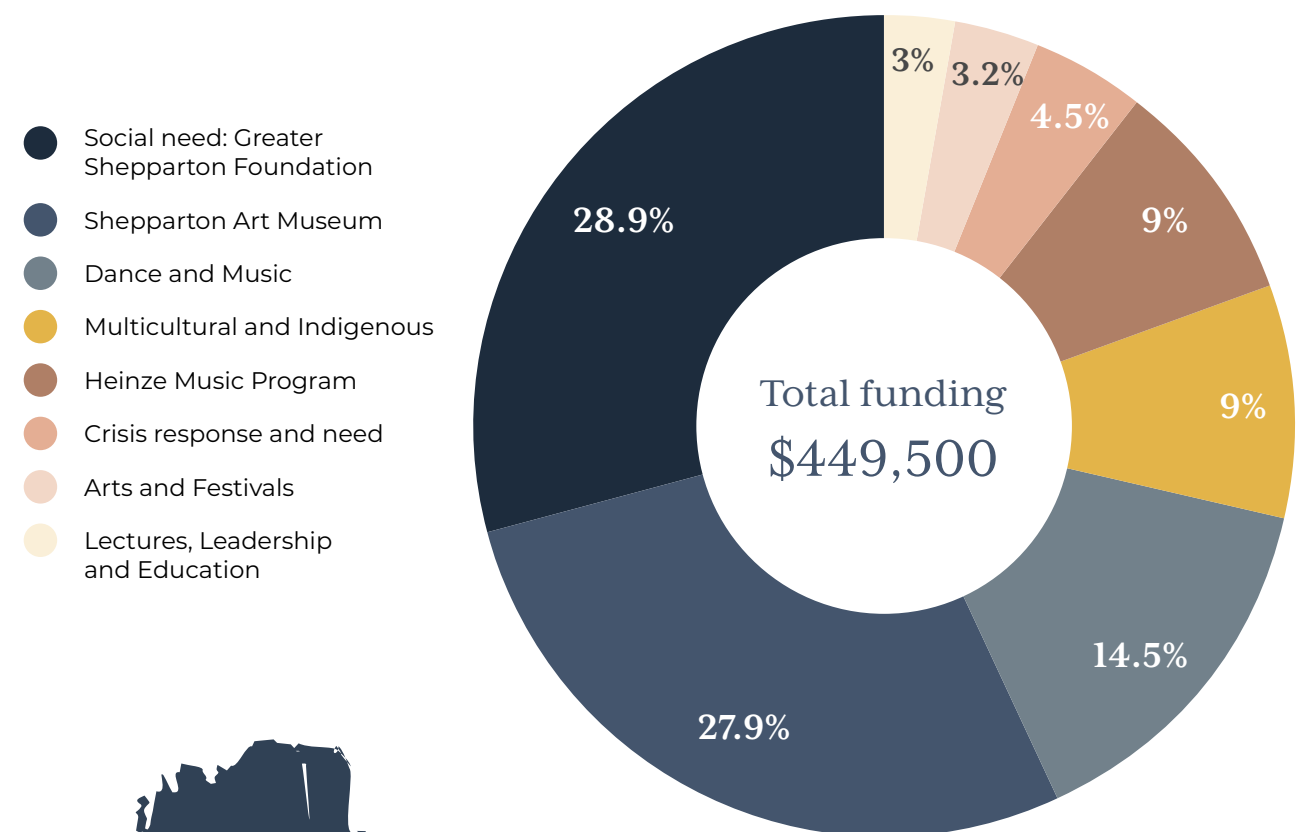
'I feel quite honoured to be writing to you about how the Sir Andrew & Lady Fairley Foundation Scholarship has assisted me throughout the year. With this assistance of funds, it has allowed me to have the experience of a lifetime at Ormond that I never expected it to be to the extent that it is.

I feel so very blessed to be part of an inspiring and welcoming community that I feel I have already been so involved in.

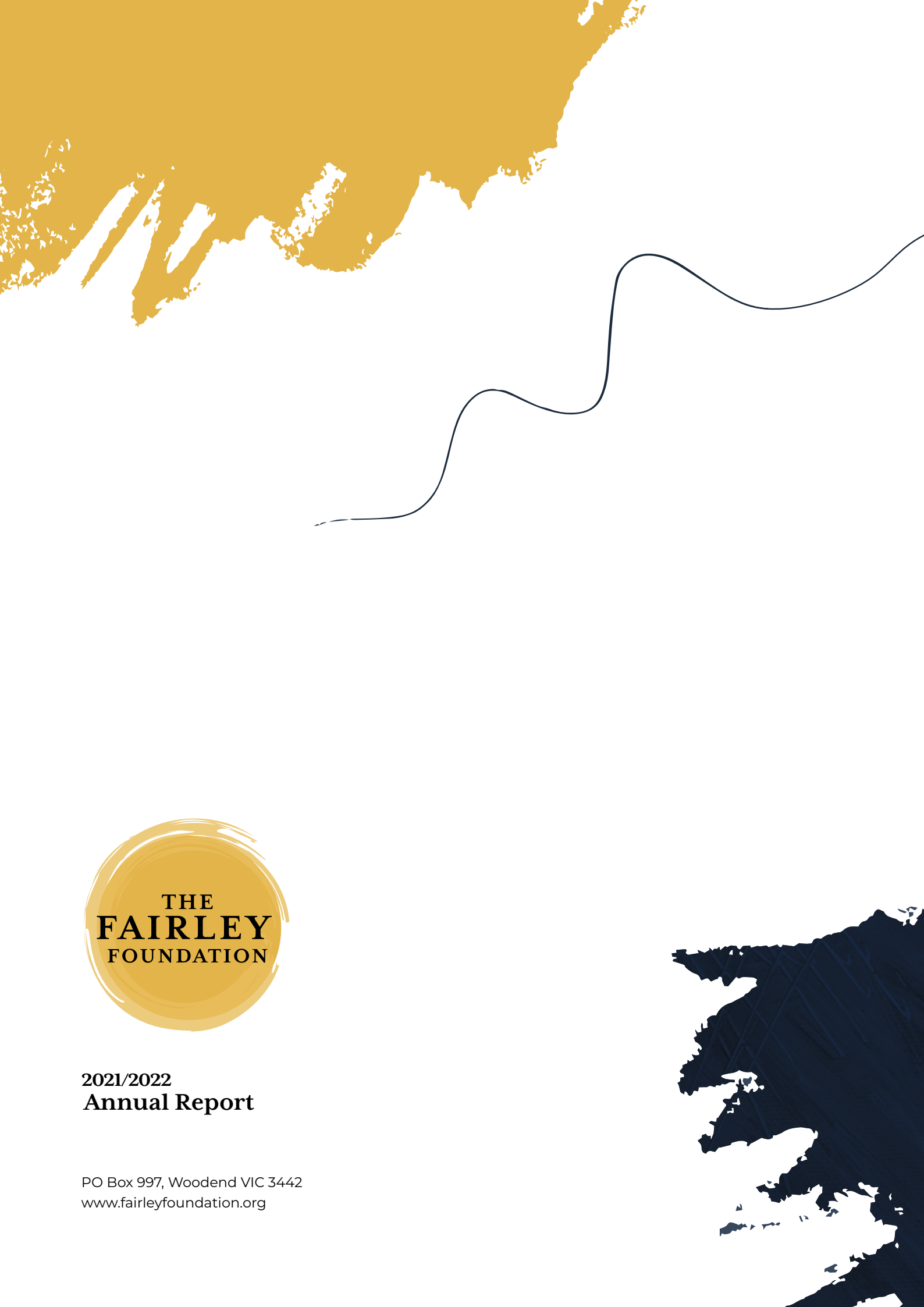
At the beginning of the year, I was very excited to be a member of the Fresher Dance Team, which I feel is already going to be one of my biggest highlights at college. It helped me make amazing friendships and open the door at college for everyone to realise that I am a dancer, as it is me that is studying Dance at the Victorian College of the Arts. I since then have been a dance ensemble member in the College musical, Sweet Charity, which was a blast and an amazing experience. I even got to assist in the choreography for parts, which allowed me to be known to so many more people, gaining a wider knowledge of the college and how it runs. Recently, I have been appointed Head of the Dance Society for 2022. This feels like a real honour to have, and I look forward to working closely with events and exposing the Ormond community to dance' writes Abbigail.

# Funding

## Overview of spend







**2021/2022  
Annual Report**

PO Box 997, Woodend VIC 3442  
[www.fairleyfoundation.org](http://www.fairleyfoundation.org)